

Clarinet in Bb

Violoncello

Piano

$\text{♩} = 60$   $\text{♩} = 100$   $\text{♩} = 60$  *poco rubato*

*mp* *mf* *mp < mf* *mp < mf*

*Spiccato*

*pp* *p*

Cl.

Vc.

Pno.

$\text{♩} = 20$   $\text{♩} = 60$

*mf* *mp* *< mf mp mf* *mp* *mf*

*mf* *mf < f* *mp* *mf* *p*

*mf* *mp*

Cl.

Vc.

Pno.

**A**  $\text{♩} = 60$  *a tempo*

*f* *mp*

*f* **A**  $\text{♩} = 60$  *mp*

*p* *pp* *pp* *pp* *pp*

*f* *mp > pp* *pp* *pp*

22

Cl. *mf* *f*

Vc.

Pno. *mp* *p* *p*

29

Cl. *mf* *pp* *mp* *pp* *mp* *p* *mp*

Vc. *mf* *f*

Pno. *mp* *p* *mp*

**B**

34

Cl. *mf* *mp*

Vc. *mp* *f* *mp*

Pno. *p*

**C**

40  $\text{♩}=30$   $\text{♩}=25$   $\text{♩}=85$

Cl.  $\text{mf}$

Vc.  $\text{mf}$  Same Pulse  $\text{♩}=85$

Pno.

45  $\text{♩}=65$  poco rubato

Cl.  $f$   $\text{mf}$   $mp$

Vc.  $f$   $\text{mf}$

Pno.  $\text{♩}=65$

49

Cl.  $\text{mf}$

Vc.  $\text{mf}$

Pno.  $\text{mf}$

53  $\text{♩} = 60$  **D** *a tempo*

Cl. *f* *mf* *mp* *mf* *mp*

Vc. *f* *mf*

Pno. *mf* *mp* *p* *mp* *mp*

57

Cl. *mf*

Vc. *mf* *p < f* *p < mp* *p < mp* *mf* *mp* *mf*

Pno. *mp* *mp*

60 **E**  $\text{♩} = 60$

Cl. *p* *mf* *f*

Vc. *p* *mf* *f*

Pno. *mf* *mf* *mp* *mp*

67  $\text{♩}=55$  **F**  $\text{♩}=60$

Cl. *mf*

Vc. *mf* *f* *mf*

Pno. *mf* *mp* *mf*

73

Cl. *f*  $\text{>}$  *mf* *p*  $\text{<}$  *mp*

Vc. *mf*  $\text{>}$  *mp*

Pno. *mf*  $\text{>}$  *mp*

79

Cl. *mf* *mp* *mp* *mf*

Vc. *f*

Pno. *mp* *f* *mp* *mf*

84

Cl.

Vc.

Pno.

89

Cl.

Vc.

Pno.

**G** ♩=60

*f* *ff* *mp* *mf*

*f* *ff* *mp*

**G**

*mp*

*Spiccato*

97

Cl.

Vc.

Pno.

*f*

*f*

*f*

*Spiccato*

102  $\text{♩} = 50$  CODETA

Cl.

Vc.

Pno.  $\text{♩} = 50$

Detailed description of the musical score: The score is for measures 102-105. The key signature has two sharps (F# and C#). The tempo is marked as quarter note = 50. The Clarinet (Cl.) part starts with a melodic line in the treble clef, featuring a trill on the second measure and an accent on the fourth measure. The Violin (Vc.) part is in the bass clef, playing a series of chords. The Piano (Pno.) part consists of two staves: the right hand has some melodic fragments and rests, while the left hand plays a steady accompaniment of chords.

Clarinet in B $\flat$

Trio for Clarinet, Cello & Piano No3

PAVANNE

5m40s aprox

♩=60

Keith Beal  
(c)2013

*mp* *mf* *mp* *mf*

♩=100

5 *poco rubato*

♩=60 ♩=20 ♩=60

> *mp* < *mf* *mf* *mp* < *mf* *mp* *mf* *mp*

13 **A** ♩=60 *a tempo*

*mf* *f* *mp*

20 *mf*

26 *f* *mf*

31 **B**

*pp* < *mp* *pp* < *mp* *p* < *mp*

35 *mf*

39 **C** ♩=30 ♩=25 ♩=85

*mp* < *mf*

45 ♩=65 *poco rubato*

*f* *mf* *mp*

49 *mf*



Clarinet in Bb

**D**

*a tempo*

53 *f* *mf* *mp* *mf* *mp* *mf* *mp*

57 *mf*

60 **E** ♩=60 *p* *mf* *f*

66 ♩=55 **F** ♩=60 *mf*

73 *f* *mf* *p* *mp* *mf*

80 *mp* *mp* *mf*

84

89 **G** ♩=60 *f* *ff* *mp*

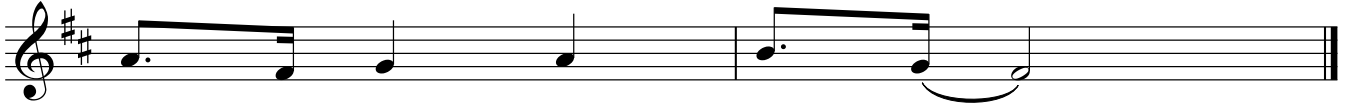
96 *mf* *f*

101

Clarinet in B $\flat$

105  $\text{♩} = 50$

*CODETA*



# Violoncello

$\text{♩} = 60$   
*Spiccato*

$\text{♩} = 100$

*mp* *mp* *mf*

5  $\text{♩} = 60$   
*mp* *p* *mp* *mf* *mf* *f* *mp*

12 **A**  $\text{♩} = 60$   
*mf* *> p* *f* *mp*

19

25

31 **B**  
*mf* *f* *mp* *f*

37 **C**  
*mp*

42  $\text{♩} = 30$   $\text{♩} = 25$   $\text{♩} = 85$   $\text{♩} = 65$   
*mf* *Same Pulse*

47 *f* *mf* *mf*

51 *f* *mf*

Violoncello

54  $\text{♩} = 60$  **D**

58

61 **E**  $\text{♩} = 60$

68  $\text{♩} = 55$  **F**  $\text{♩} = 60$

75 *mf* *f* *mf* *mp*

81 *f*

85

89 **G** *f* *ff* *mp*

96 *f*

102  $\text{♩} = 50$

Piano

♩=60                      ♩=100                      ♩=60

2                      2                      2

*pp*                      *p*                      *p*

8

2                      2

15 **A** ♩=60

2                      2

*mp* > *pp*                      *mf*                      *mp*                      *f*

*pp*                      *pp*

23

*mp*                      *p*                      *p*

*mp*                      *p*                      *p*

29 **B**

*mp*                      *p*                      *mp*                      *p*

36 **C**

*mp*                      *p*                      *mp*                      *p*

Detailed description: This is a piano score for a piece in 3/4 time. It consists of six systems of music, each with a treble and bass clef staff. The first system (measures 1-7) features a tempo of 60 bpm, a key signature of one flat, and a 2-measure rest in both staves. The second system (measures 8-14) has a tempo of 100 bpm and continues with rests and chords. The third system (measures 15-22) returns to 60 bpm and includes dynamic markings like *mp*, *pp*, *mf*, *mp*, and *f*. The fourth system (measures 23-28) features a melodic line in the treble clef with dynamics *mp*, *p*, and *p*. The fifth system (measures 29-35) is marked with a box 'B' and shows dynamics *mp*, *p*, *mp*, and *p*. The sixth system (measures 36-42) is marked with a box 'C' and includes dynamics *mp*, *p*, *mp*, and *p*. The score uses various musical notations including rests, chords, and melodic lines.

Piano

♩=30 ♩=25 ♩=85

41

45 ♩=65

49

54 ♩=60

**D**

60 ♩=60

**E**

68 ♩=55 ♩=60

**F**

74

*mp*

80

*mp* *f* *mp* *mf*

84

89 **G**

**3**

**3**

93

*mp* *f*

100

*Spiccato*

105 ♩=50